



## Farr 40 OD

€85,000 VAT included

Reference ID: 688

Displacement (Kg): 5008

Builder / Designer: Farr Yacht Design

Beam (mtr): 3.95

Model: Farr 40

Draft (mtr): 2.60

:

Displacement (Kg): 5008

Year: 2000

Location: Bulgaria

Engine: Yanmar 3YM30

### Disclaimer

The Company offers the details of this vessel in good faith but cannot guarantee or warrant the accuracy of this information nor warrant the condition of the vessel. A buyer should instruct his agents, or his surveyors, to investigate such details as the buyer desires validated. This vessel is offered subject to prior sale, price change, or withdrawal without notice.

## **Description**

Owners comments: Farr 40 in pristine working condition

### **Highlights:**

- Southernspars carbon fiber rig Farr 40 One design
- Sails in very good condition
- Carbon fiber spi pole Farr 40 One Design long model for masthead.
- Carbon fiber spi pole Farr 40 One Design short model for fractional
- Accomodation with heating, fridge and oven
- B&G electronics with autopilot

IRC 2023: 1.160

## **Rigging**

- Southernspars carbon fiber rig Farr 40 One design. Mast sprayed 2015
- Forestay new for the 2020 season
- Carbon fiber spipole Farr 40 One Design long and short model for masthead
- Mastjack - Hydraulic, new hydraulicpistons for the mast 2019
- Running rigging, all Farr40 OD. Dynema 78 or 95, covers different depending of use & color.
- Jib-sheets changed 2019
- New jib halyard and spi sheets 2023
- Backstay jack full refurbished 2022

## **Sails**

### **Mainsails:**

- GranSegel Carbon 2018 In absolute top condition, only sailed 1.5 seasons.
- Millennium Carbon 2015 good condition, offshore racing main.
- North Sails Carbon older sails are good for manoeuvrer training etc.
- 3-4 extra mainsails in delivery condition
- Stormmain

### **Jibs**

- 2020 GranSegel Carbon fiber jib 3 Heavy / Heavy
- 2020 GranSegel Carbon fiber jib 2 Medium / Heavy
- 2017 GranSegel Carbon fiber jib 1 Light
- 5-6 jibs for delivery / training in different condition and age

### **Disclaimer**

*The Company offers the details of this vessel in good faith but cannot guarantee or warrant the accuracy of this information nor warrant the condition of the vessel. A buyer should instruct his agents, or his surveyors, to investigate such details as the buyer desires validated. This vessel is offered subject to prior sale, price change, or withdrawal without notice.*

## Spinnakers

- 2018 S1 GranSegel Masthead approx. 160 sq / m in top condition. ORCi optimized
- 2018 S2 GranSegel Masthead approx. 160 sq / m in top condition. ORCi optimized
- 2007 S2 North Sails Masthead ca 160-170 sq / m • S3 & S4 Fractional for training.
- some extra spinnaker for training.

## Accommodations

Interior can easily be removed when racing

- Upholstery of cushions for moist surroundings
- Comfortable sofas with backrest and handrests.
- Mattresses in aft berths with additional backrest
- Big bow berth with extra thick foam mattress
- Heater Webasto AirTop Evo 3900 2012
- Head with toilet and sink
- Led lightning

## Galley

- Oven with 2 burners
- Refrigerator, built on the right side of the existing compartment
- Farr 40 OD Waterbag with electric pump and water crane in kitchen to the left of the mast

## Deck and Cockpit

- Harken deckhardware.
- Tillersteering
- Deckcover
- Deck painted summer 2020
- All winches and cleats serviced 2023

## Electrics

- July 2018 2X Global EGC115-12 AGM Deep Cycle.
- Batterycharger C-tek 12 v MXS 25 A
- Stereo speakers in the cockpit.

## Engine

### Disclaimer

*The Company offers the details of this vessel in good faith but cannot guarantee or warrant the accuracy of this information nor warrant the condition of the vessel. A buyer should instruct his agents, or his surveyors, to investigate such details as the buyer desires validated. This vessel is offered subject to prior sale, price change, or withdrawal without notice.*

Full engine and saildrive service 9/2023

- Engine: Yanmar 3YM30
- Power: 21 Kw / 30 hp
- Yanmar S-drive
- Model year engine: 2009
- Hours: Approx. h
- Propeller: 2 blade folding

## **Safety**

- Manual bilge pump
- Gas-proof container for LPG tube installed
- Flares (date unknown)
- Rescue-line
- Wood plugs for every pipe / hose in the hull

## **Electronics and Navigational Gear**

- B&G plotter Zeus 2
- B&G repeats H300 system with all sensors for log, wind angles etc.
- VHF Icom
- Autopilot Raymarine ST2000 tiller pilot

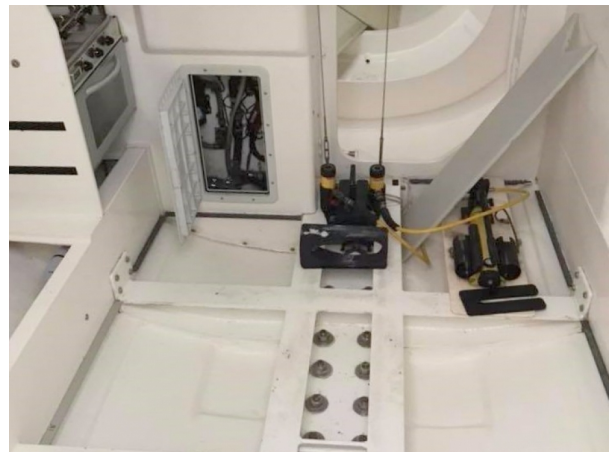
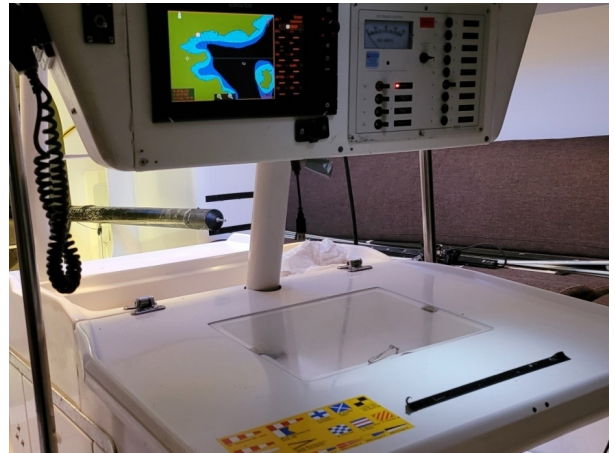
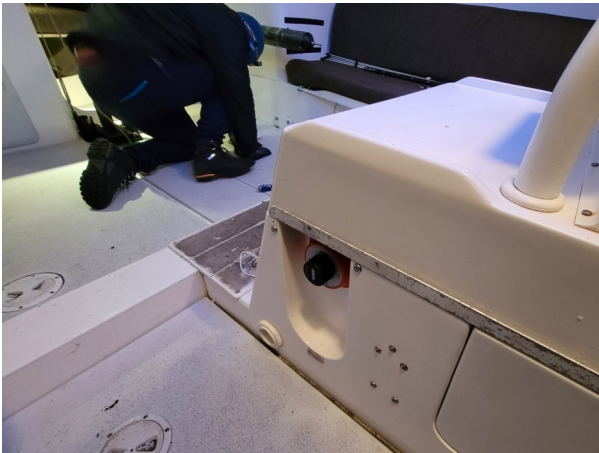
## **Additional**

- Cover mainsail
- Farr 40 OD cradle

## **Disclaimer**

*The Company offers the details of this vessel in good faith but cannot guarantee or warrant the accuracy of this information nor warrant the condition of the vessel. A buyer should instruct his agents, or his surveyors, to investigate such details as the buyer desires validated. This vessel is offered subject to prior sale, price change, or withdrawal without notice.*





#### Disclaimer

The Company offers the details of this vessel in good faith but cannot guarantee or warrant the accuracy of this information nor warrant the condition of the vessel. A buyer should instruct his agents, or his surveyors, to investigate such details as the buyer desires validated. This vessel is offered subject to prior sale, price change, or withdrawal without notice.

## **Viewing Arrangements**

Due to the corona crisis and the varying locations of our yachts, we offer viewings of yachts for sale anywhere in the world from the comfort of your own home. From live walk-throughs using tools such as WhatsApp, Facetime or Zoom you can literally zoom in to every corner and check out every detail of the decklayout, interior configuration, rig and the engine room.

During these guided tours, together with one of our brokers there is the opportunity to ask our brokers all questions you have as when you make a real-life visit.

Together with our specifications, this package will give you a realistic impression of the volume, layout and condition of the yacht and equipment.

After an online guided tour together with the package of information at hand, you can decide if you like to see the yacht, or wish to send a surveyor to check the yacht. We hope to see you soon online or in real life for a visit on the yacht of your dreams.

### **Team Racing-Yachts.com**

T: +31 642444433

E: [contact@racing-yachts.com](mailto:contact@racing-yachts.com)

Opening Hours - 7 Days per Week

**Wish to sell your yacht? We are always looking for boats for our clients.**

**Contact us for more information on the way we work.**

## **Social Media Links**



### **Disclaimer**

*The Company offers the details of this vessel in good faith but cannot guarantee or warrant the accuracy of this information nor warrant the condition of the vessel. A buyer should instruct his agents, or his surveyors, to investigate such details as the buyer desires validated. This vessel is offered subject to prior sale, price change, or withdrawal without notice.*